

**Alameda County**

# **Violence Prevention**

**Advisory Board**

## **Realities of Violence: Data & Statistics**

September 18, 2003

Sandra Witt  
Community Assessment Planning & Education Director  
Public Health Department

Olis Simmons  
Children's Services Coordinator  
Health Care Services Agency

# 5 Part Presentation

- ❖ Defining Violence
- ❖ Violence Data Profile
- ❖ Underlying Factors & Data
- ❖ Sample Costs of Violence
- ❖ Current Violence Prevention Efforts

# Defining Violence

## World Report on Violence and Health

“The intentional use of *physical force or power*, threatened or actual, against oneself, another person, or against a group or community, that either results in or has a high likelihood of resulting in *injury, death, psychological harm, mal-development or deprivation.*”

World Report on Violence and Health, WHO 2002

# 7 Types of Violence

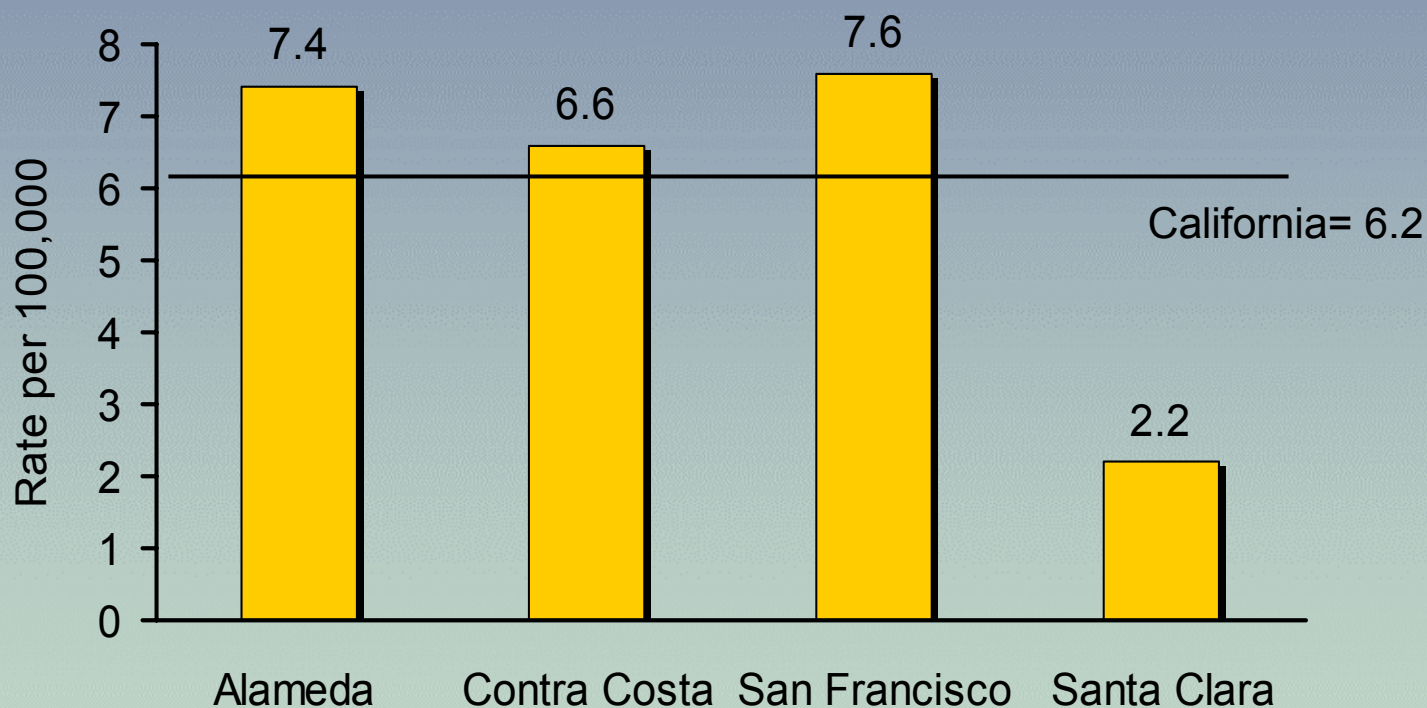
- ❖ Homicide
- ❖ Suicide
- ❖ Assault
- ❖ Self-inflicted Injury
- ❖ Family Violence
- ❖ Child Abuse
- ❖ Elder Abuse

# Data Profile

- Homicide/Assault
- Suicide/Self-inflicted injury
- Family violence
- Child abuse

# Homicide

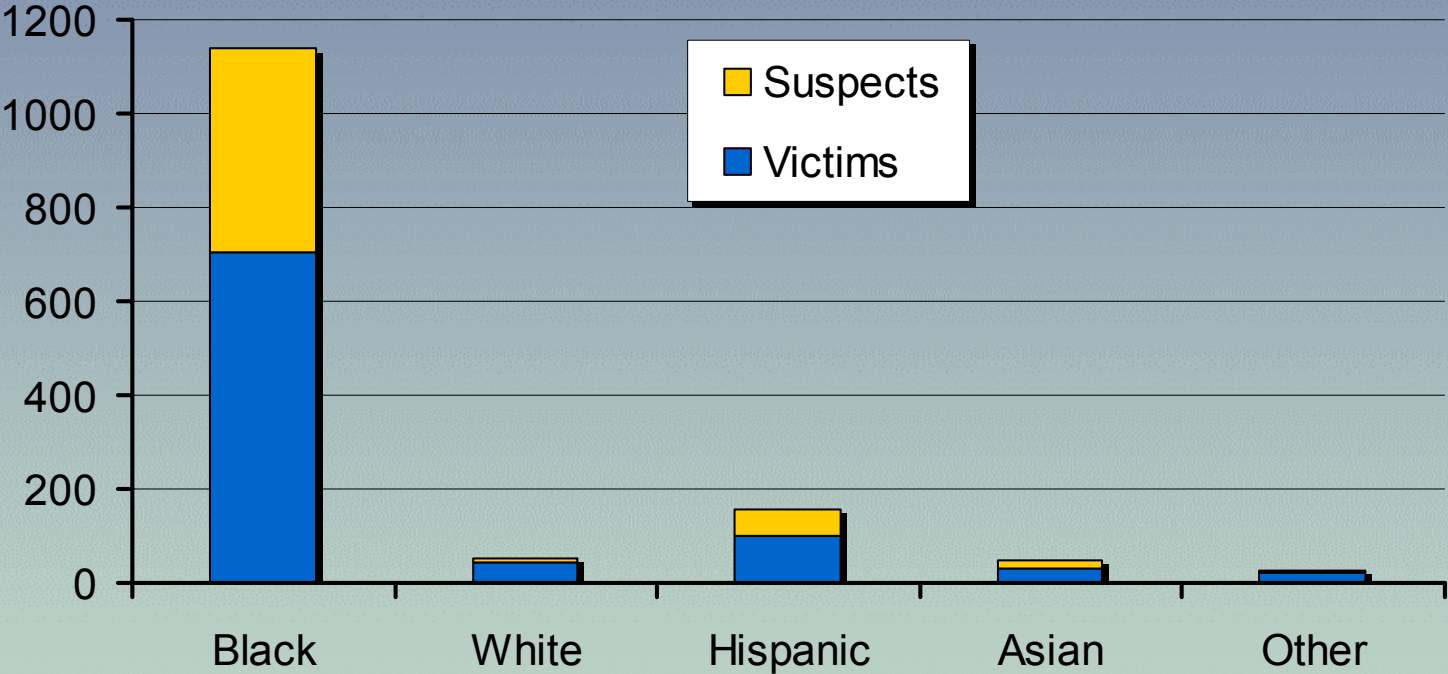
## Selected Counties and California Age-Adjusted Rates, 1999-2001 Average



California DHS: County Health Profiles, 2003

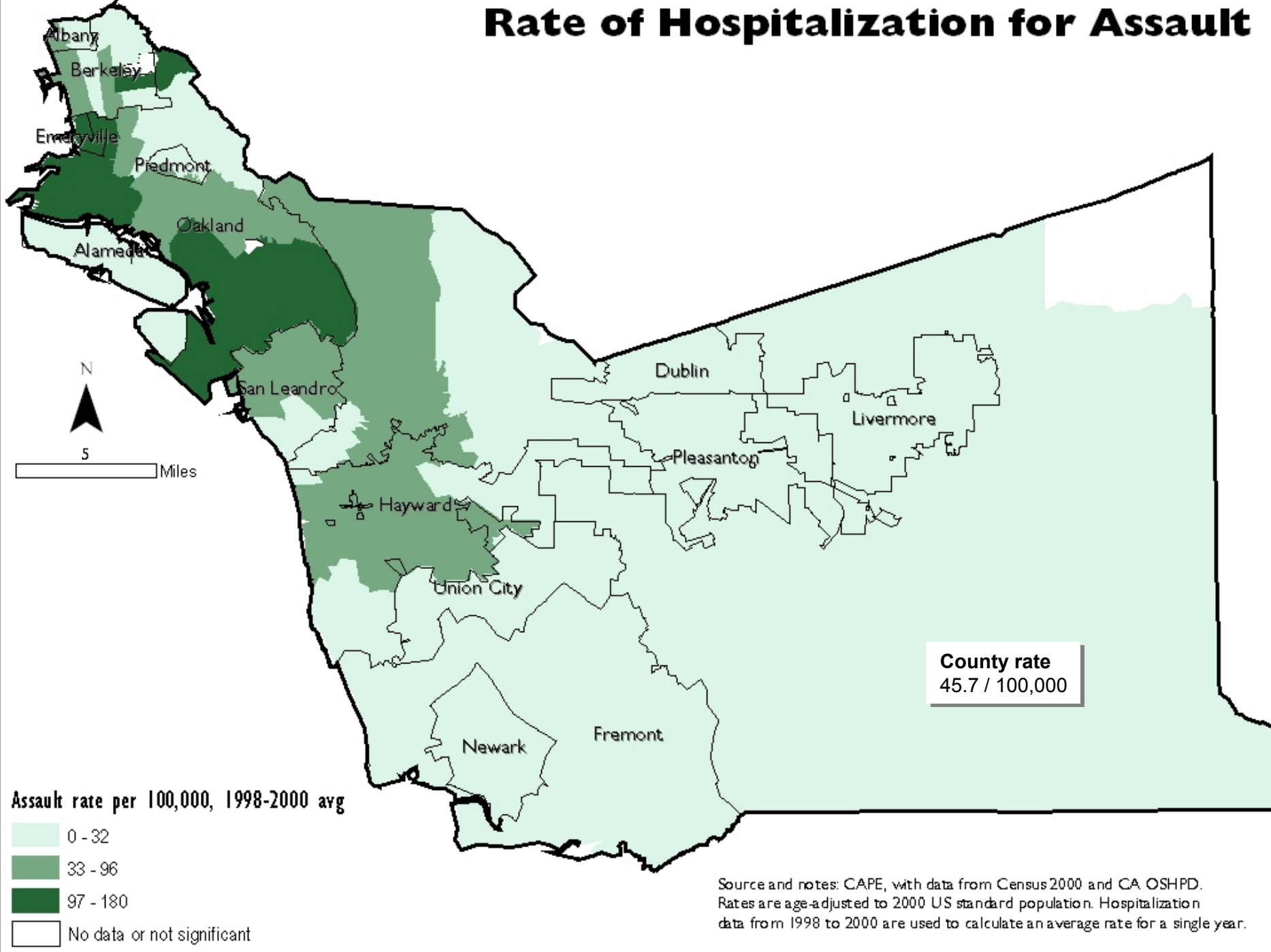
# Homicide

## Oakland Victims and Suspects by Race Jan 1994 to July 2002



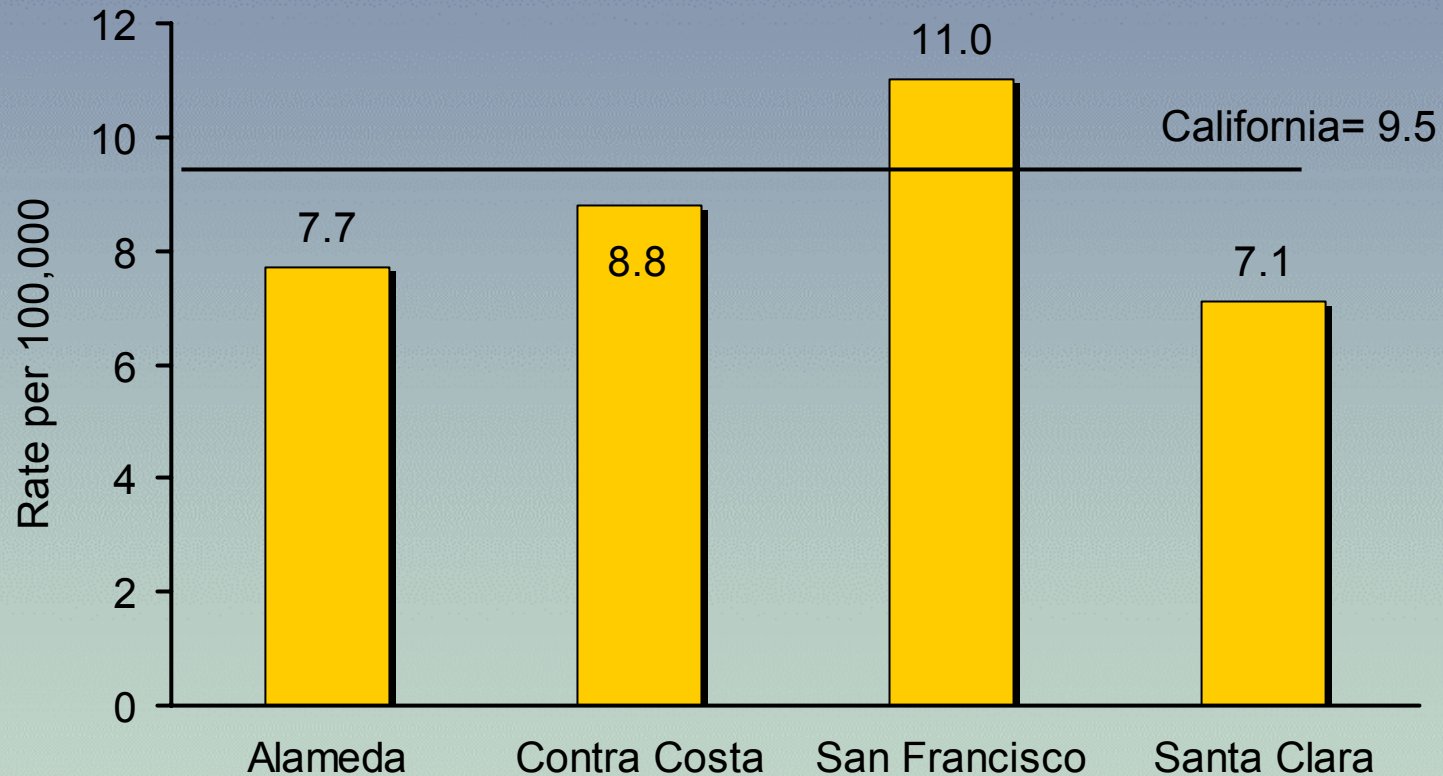
City of Oakland Police Department, 2002

# Rate of Hospitalization for Assault



# Suicides

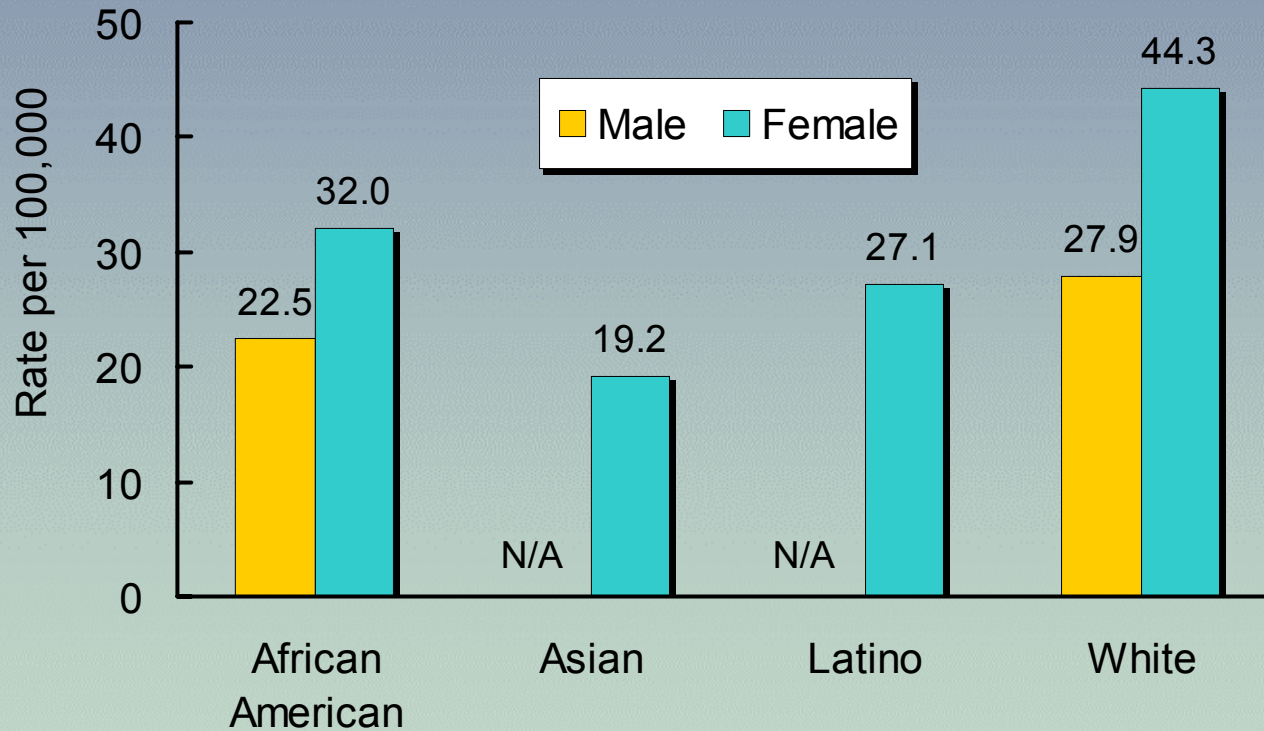
## Suicide Rate, Selected Counties & California Age-Adjusted Rates, 1999-2001 Average



Calif DHS County Health Profiles, 2003

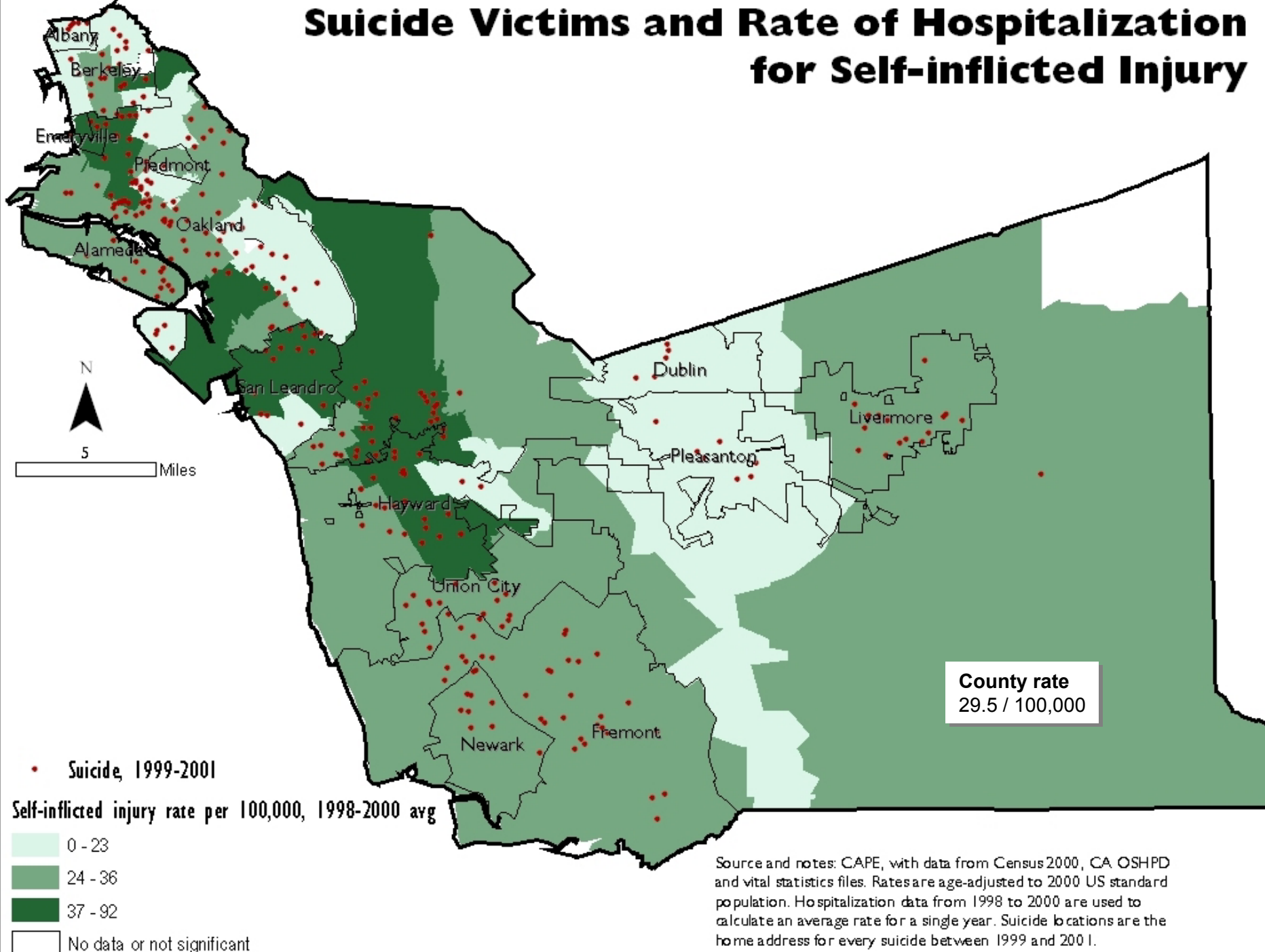
# Self-Inflicted Injury

Hospitalizations for Self-Inflicted Injury  
Age-Adjusted Rates by Sex and Race/Ethnicity  
1998-2000 Average



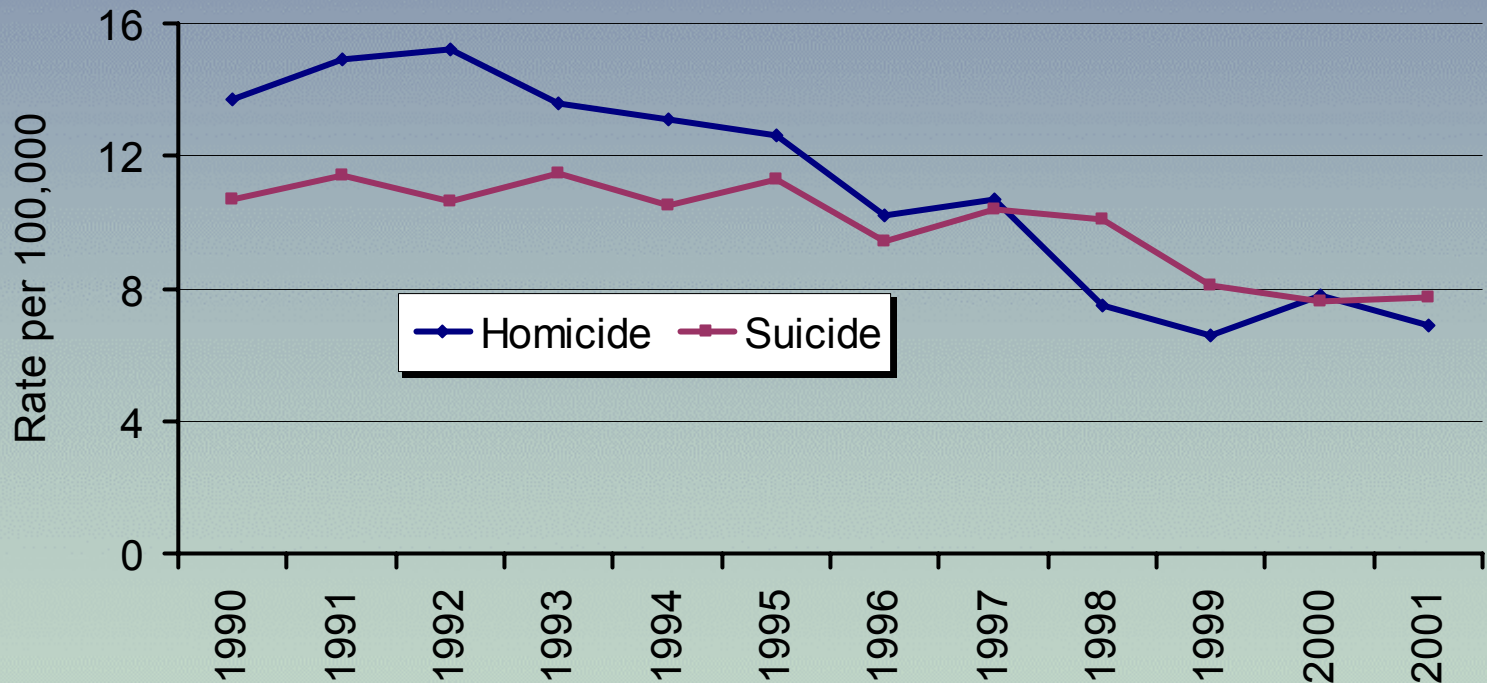
Alameda County Public Health Department, CAPE Unit

# Suicide Victims and Rate of Hospitalization for Self-inflicted Injury



# Homicides & Suicides

## Homicides and Suicides in Alameda County Age-Adjusted Rates, 1990-2001



Alameda County Public Health Department, CAPE Unit

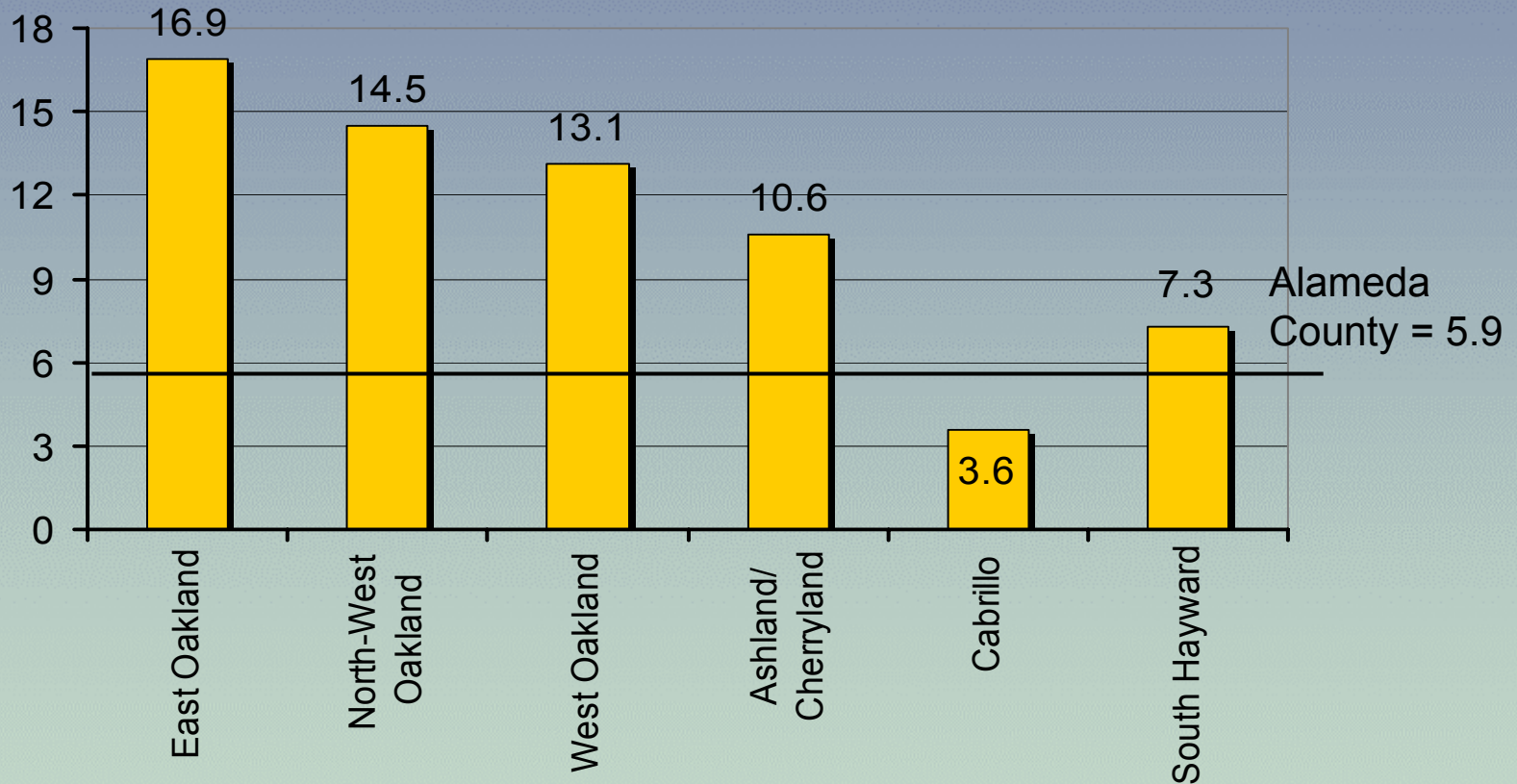
# Family Violence

- Leading cause of injury to women ages 15 to 44 years in the US
- In 2001 police received 5,700 related calls
- Estimates are that only 20% of incidents are reported to police
- From 1994 -2000 there were an average of 24 related deaths each year
- Child abuse is 15 times more likely in families with family violence

A Profile of Family Violence in Alameda County, Alameda County  
Domestic Violence Collaborative Report 2003

# Child Abuse & Neglect

**Child Abuse and Neglect Rate**  
Per 1000 Children Under 18 Years, 1999



Alameda County Public Health Department, CAPE Unit

# **Underlying Factors**

- **Poor Educational Attainment**
- **Unemployment & Underemployment**
- **Poverty**
- **Street Economy Participation**
- **Lack of Appropriate Role Models & Activities**
- **Substance Abuse & Risk-taking Behaviors**
- **Racism & Other Forms of Oppression**
- **Other Socio-economic Factors**

# Causes of Violence

## In the words of teens...

We can walk to guns,  
drugs, and alcohol

No jobs

Disrespect for youth

No hope for a way out

Kids having kids

## In the words of researchers...

Availability of guns,  
drugs, and alcohol

Relative economic disparity

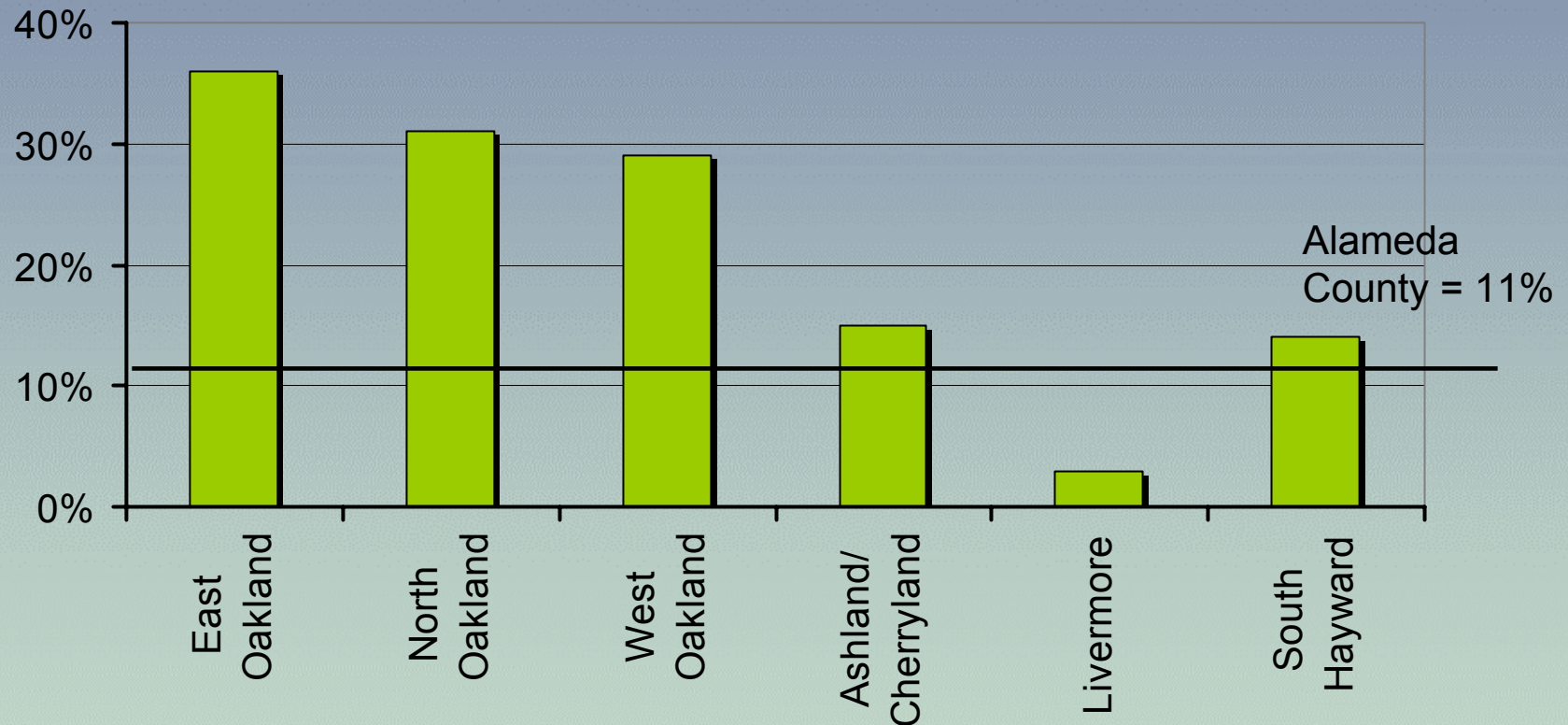
No positive role models  
for young people

Lack of access to resources

Teen pregnancy

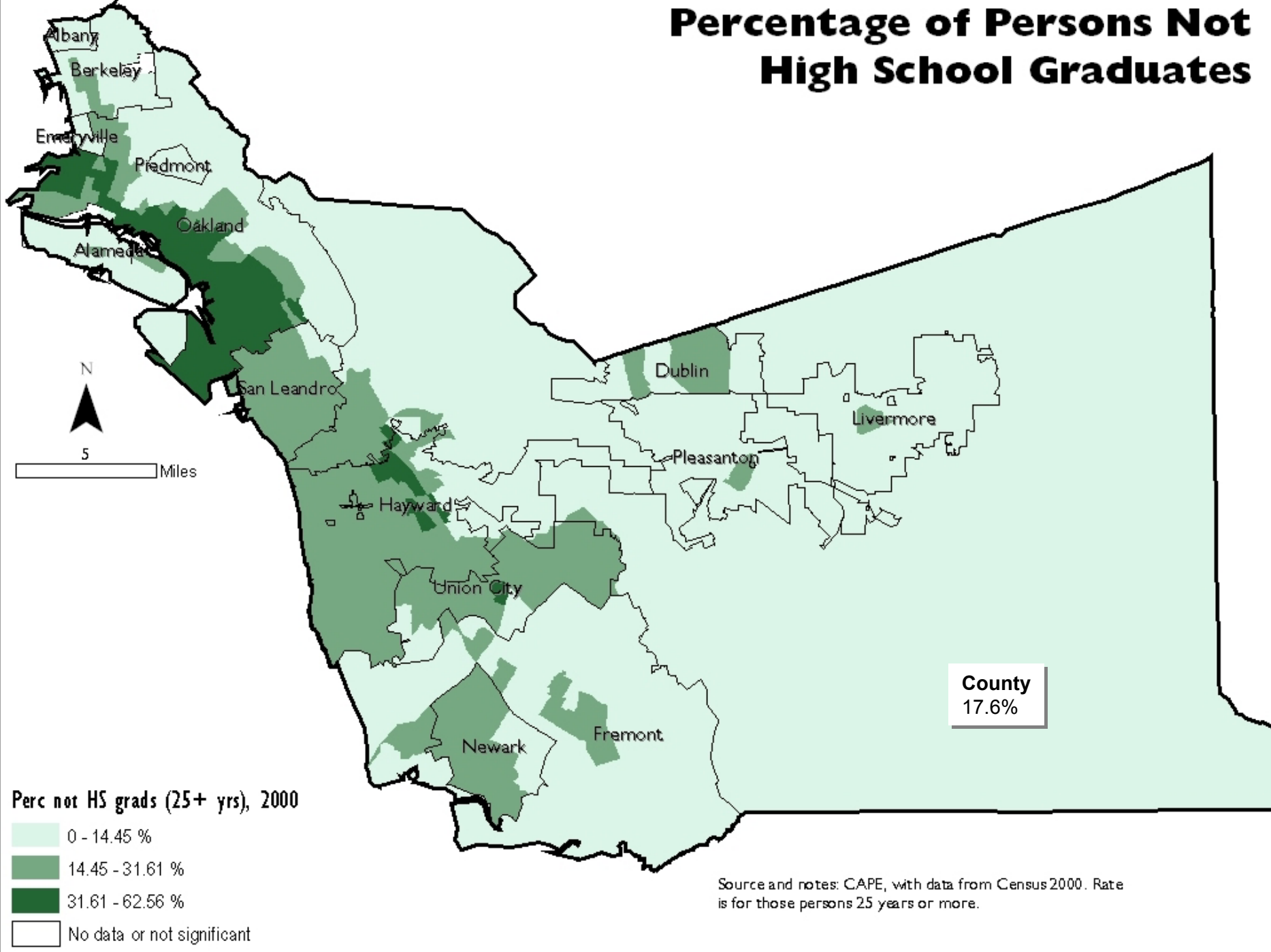
# Indicators

## Percent of Children <18 Participating in CalWorks

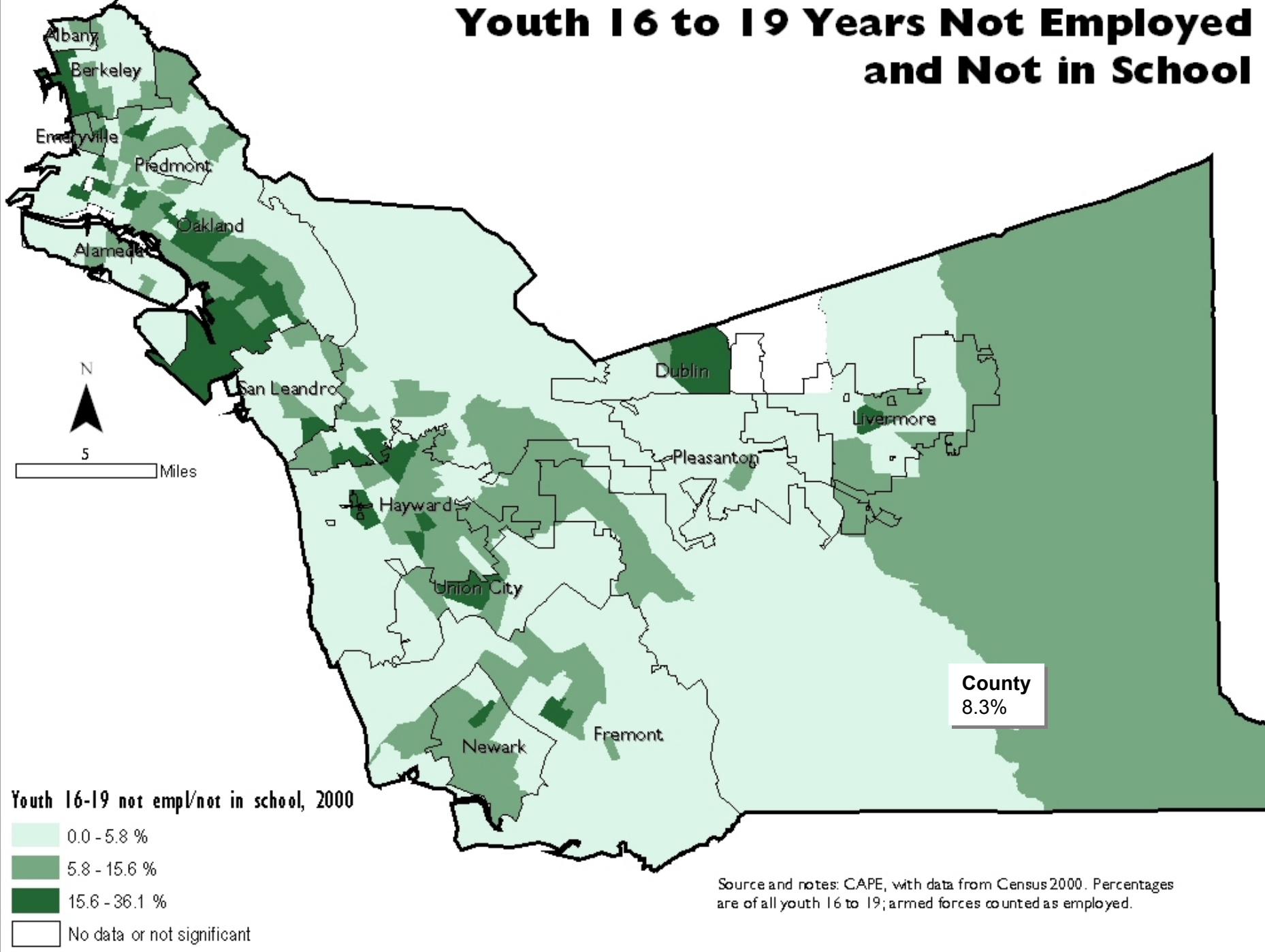


Alameda County Public Health Department, CAPE Unit

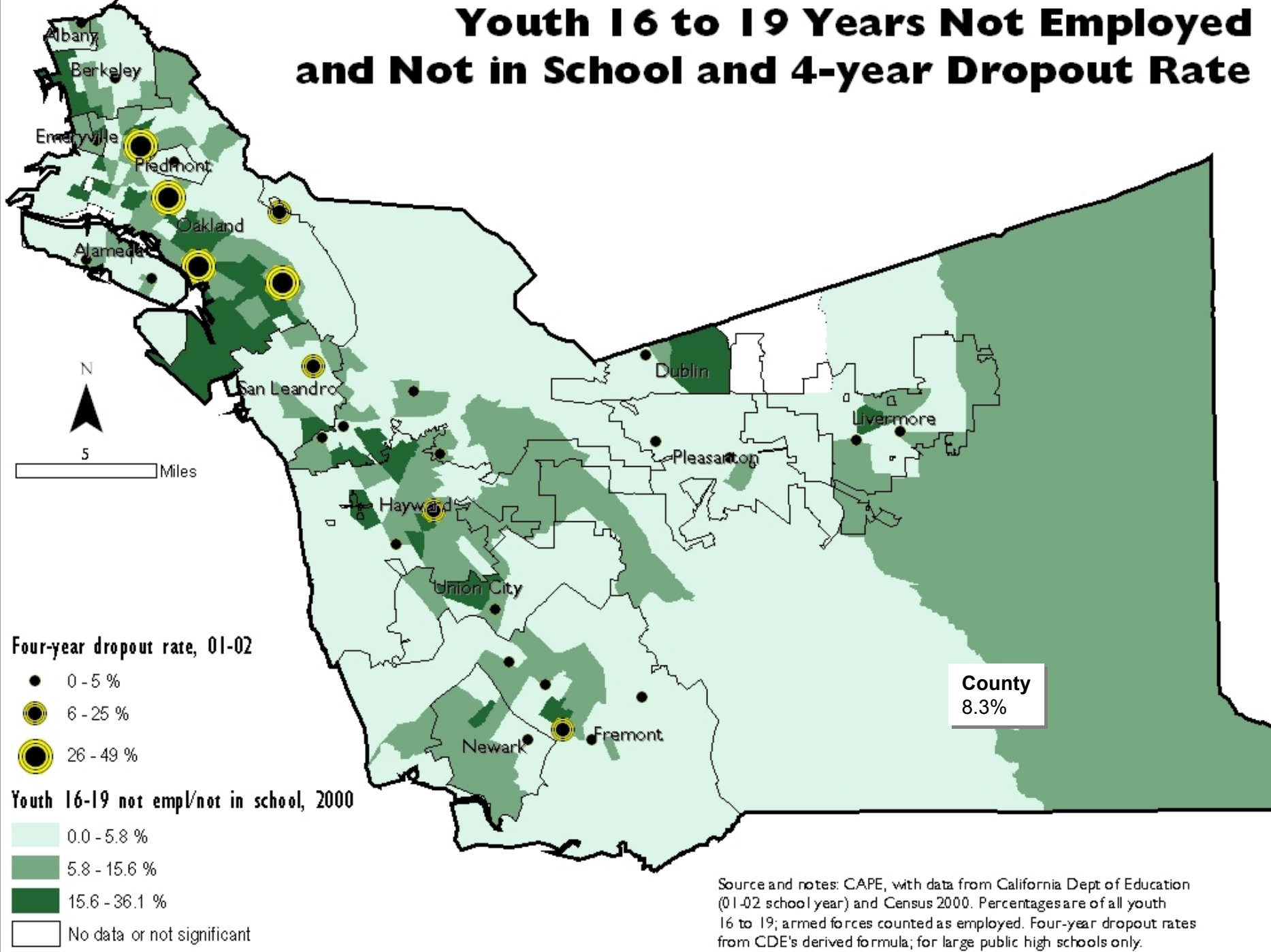
# Percentage of Persons Not High School Graduates



# Youth 16 to 19 Years Not Employed and Not in School



# Youth 16 to 19 Years Not Employed and Not in School and 4-year Dropout Rate



**Four-year dropout rate, 01-02**

- 0 - 5 %
- 6 - 25 %
- 26 - 49 %

**Youth 16-19 not empl/not in school, 2000**

- 0.0 - 5.8 %
- 5.8 - 15.6 %
- 15.6 - 36.1 %
- No data or not significant

**County**  
8.3%

Source and notes: CAPE, with data from California Dept of Education (01-02 school year) and Census 2000. Percentages are of all youth 16 to 19; armed forces counted as employed. Four-year dropout rates from CDE's derived formula; for large public high schools only.

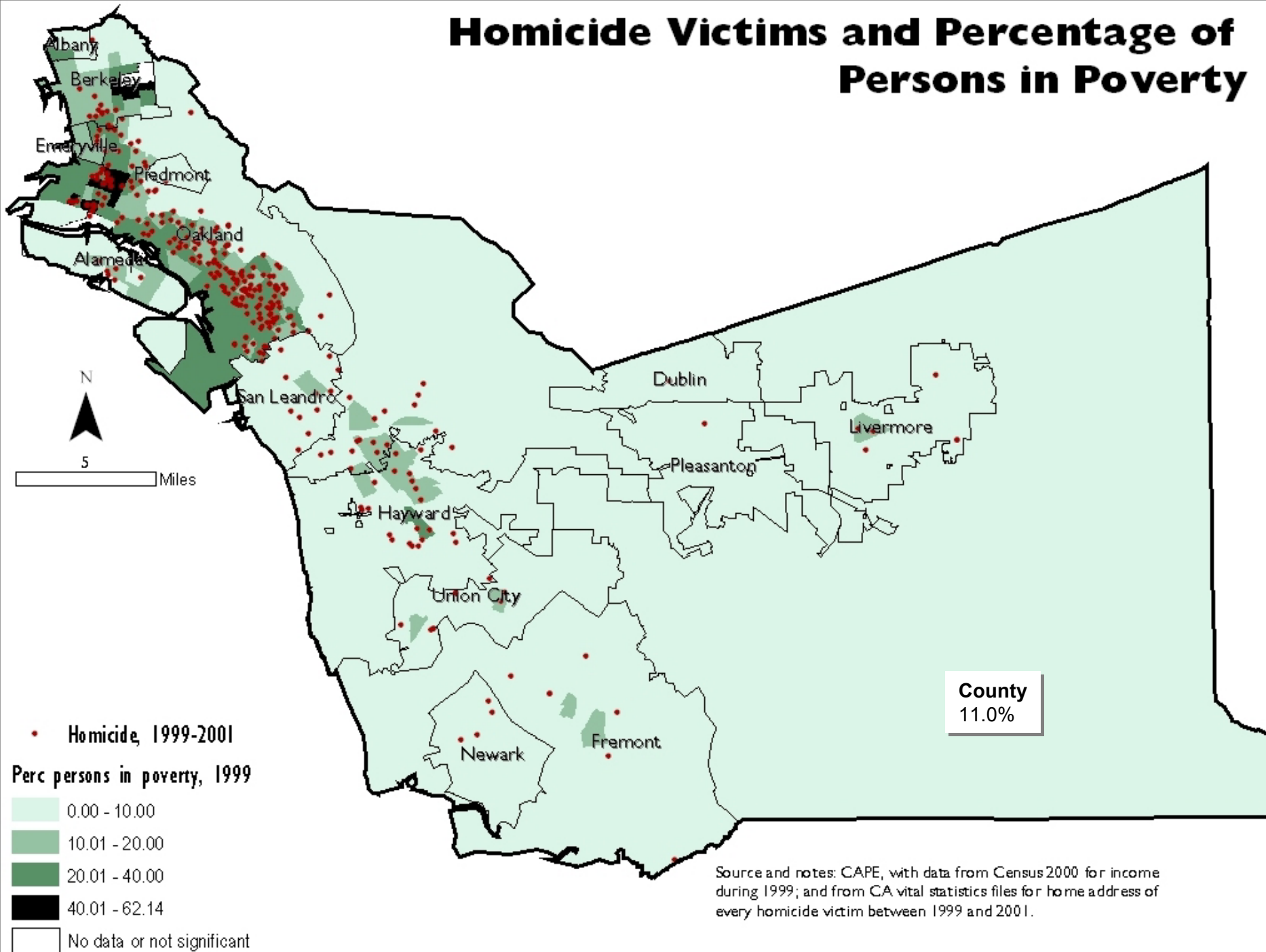
# Unemployment & Homicide

## Unemployment and Homicides In Alameda County 1990-2002



California DOJ and California EDD

# Homicide Victims and Percentage of Persons in Poverty



# Sample Costs of Violence

## Medical Cost of Intentional Injuries Average 1996-1997 Cost (\$1996)

	Alameda County	California
Suicide	\$ 9.5 million	\$ 221.8 million
Assault	\$ 32.9 million	\$ 683.9 million
- Firearm-related	\$ 12.4 million	\$ 282.4 million

National Economics and Insurance Resource Center

**Average hospital bill for one gunshot wound in the U.S. is over \$40,000 with 60-80% of these costs paid by the public.**

Rizer et al. Hospitalization charges, costs, and income for firearm-related injuries at a university trauma center, *JAMA*, 273(22):1768-1773.

**California Youth Authority cost is \$27,000 per year/per youth.**

# Initial Inventory of Current Efforts



# Initial Inventory of Current Efforts

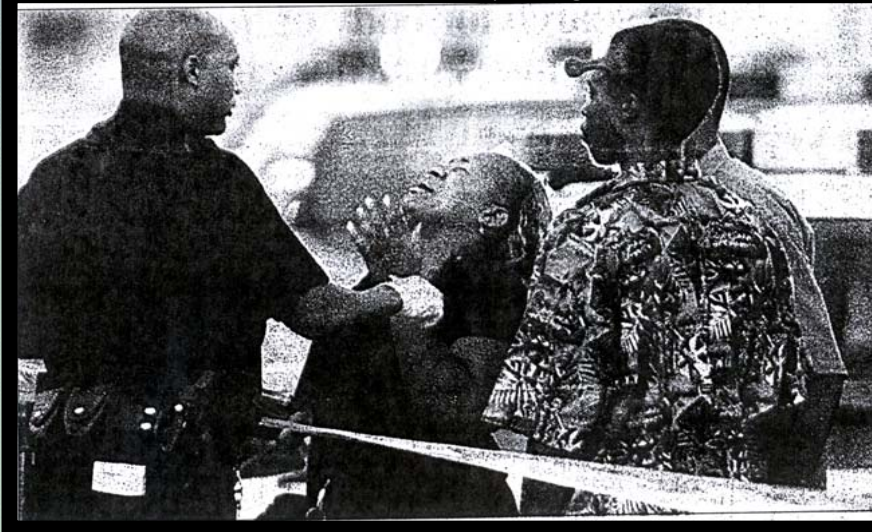
- Police brutality: *Youth & OPD Taskforce*
- Parolee re-entry programs
- Youth-centered services: *Project YES!*
- Changing laws: *Loitering ordinance*
- Foundation initiatives: *Safe Passages*
- Faith-based efforts: *Charitable Choice*
- Provider networks: *Probation TANF*
- Data tracking & analysis: *Surveillance system*
- Collaborative asset inventories: *Keep the Peace 2003*

# Summary

- Complex issue: multiple contributing factors
- Disproportionate impact on youth & young adult males of color
- Need for cross-system solutions
- Community participation critical to sustainable solution
- Value of data-driven planning
- Critical need for countywide coordinated prevention-focused effort

## Dying young in Oakland

Oakland Tribune, Friday, August 2, 2002



**Alameda County**

# **Violence Prevention**

**Advisory Board**

**Questions  
&  
Answers**

September 18, 2003

Sandra Witt  
Community Assessment Planning & Education Director  
Public Health Department

Olis Simmons  
Children's Services Coordinator  
Health Care Services Agency